

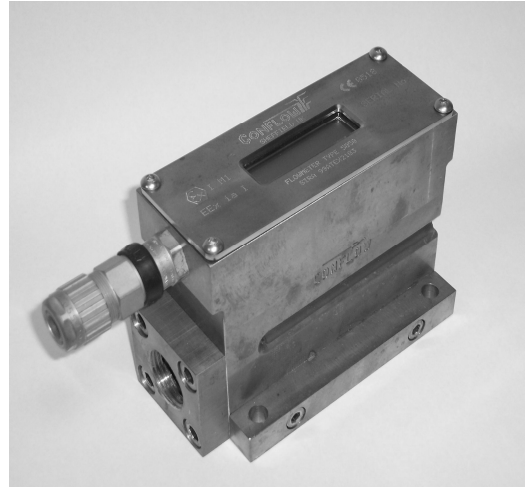
## FLOW MEASUREMENT & CONTROL

### Electronic Flowmeters Code 5050A

Conflow is renowned the world over as the leading supplier of specialist components and systems for dust suppression, fire suppression and all aspects of water control in underground coal Mining.

Today Conflow products can be found operating both on the surface and underground in all the major mining industries, from coal to gold, in more than 30 countries around the world. Furthermore, wherever minerals are moved in bulk – such as quarries, power stations and steel works - Conflow products are helping to reduce the negative impact on the local environment.

At Conflow our aim is to provide you with a comprehensive range of services to meet your individual needs.



### Description

The **Conflow Code 5050A** - Electronic Flowmeter gives a linear electrical signal corresponding to the volume rate of flow of fluid in the pipeline or system.

The principle of operation is based on the Conflow Code 452 flowmeter. In this case the moving magnet causes a Hall Effect Diode to produce a signal dependent on the strength of the magnetic flux around it. In this way the flow of fluid through the meter is transduced to a directly proportional electronic signal.

The unit incorporates an on board LCD display showing rate, pressure and temperature.

The transducer is also compatible with a wide range of instruments, data loggers, display devices and outstations to provide remote display of fluid flow, fluid temperature and totalization of flow with respect to time.

### Typical Applications

- Monitoring water or oil flows to the various systems on coal cutting machines, AFC gearboxes and roof bolting machinery
- Monitoring water lines for dust suppression, motor cooling, ITP systems and fire fighting

## FLOW MEASUREMENT & CONTROL

### Electronic Flowmeters Code 5050A

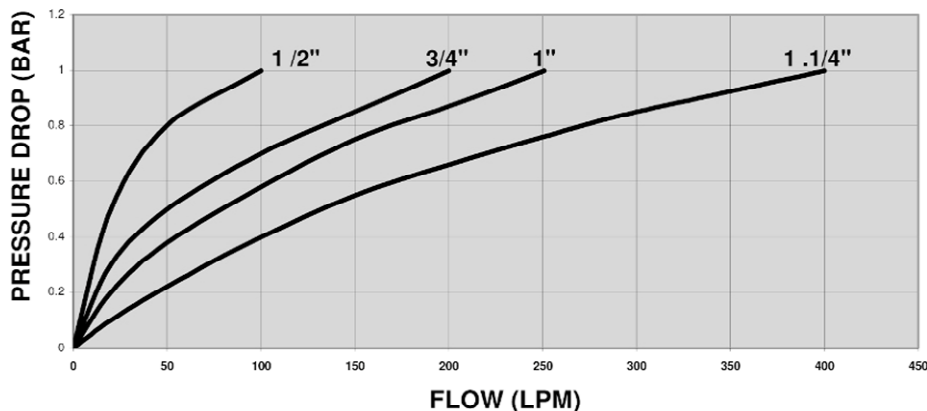
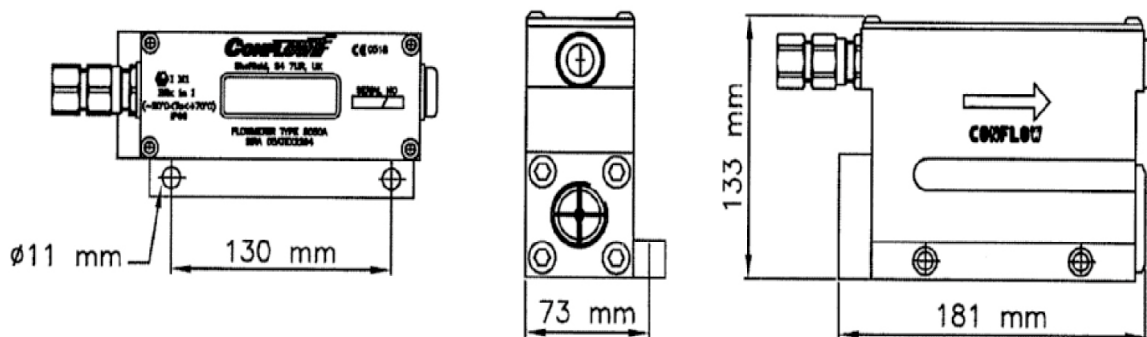
#### Features

- 1/2", 3/4", 1" & 1 1/4" sizes available
- Maximum working pressure 400 bar
- 4 – 20mA or 0.4 – 2 V.dc flow output versions
- Accuracy 1.5% of FSD (1%, 0-80 °C)
- Cable Gland Entries
- I.S. Approved - Cert. ATEX 05ATEX2294, IECEX SIR05.0061 AN2Ex 06.3032x
- Unit available with or without pressure transducer

#### ALSO AVAILABLE

- Bypass Electronic Flowmeter, Suitable for high pressure and flow rate - Details on request

#### Specifications



The information on this data sheet is accurate to the best of Conflow's knowledge, however we reserve the right to alter the product specification at any time. For any specific updated detail, please contact us.